

## DRAPERY TRACK SYSTEMS

# Drapery track systems

Drapery track systems electronically operate pinch pleat or ripplefold curtains to elegantly provide quiet, convenient daylight control. You can use your own material for drapery tracks.

### Drapery sizes

Lutron drapery track systems provide a wide range of options to suit your needs. Our systems allow for tracks up to 30 feet long, single or multi-bend curved tracks, manual-open override, track splicing, 90° curves, and more.

### Draw styles

**Right Draw**—the drive is located on the right-hand side, and the carrier opens drapery from the left toward the right. (Drive remains hidden behind the stackback.)

**Left Draw**—the drive is located on the left-hand side, and the carrier opens drapery from the right toward the left. (Drive remains hidden behind the stack back.)

**Center Draw**—one drive uses two carriers to open the drapery from the center to the left and right simultaneously. (Drive can be located on the left or right, while remaining hidden behind the stack back.)

### Straight track

The straight track system is available in the following configurations:

- Single or dual track
- Standard single track with lengths up to 18ft, and up to 30ft spliced

### Curved Track

Lutron drapery track can be custom-curved to fit a curved wall, bay window, and many other special applications.

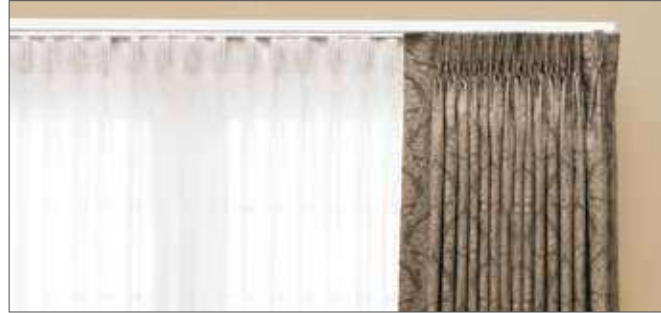
- Standard arc: 90° bend with a 20" minimum radius
- Custom arcs are also available, and can accommodate center and single draw



## DRAPERY TRACK SYSTEMS

### Pleat styles

**Pinch Pleat**—the style is named for the pleated look created by pinched gatherings of the fabric at the top of the drapery. Pins on the back of the drapery are simply looped through the carriers on the track when installed.

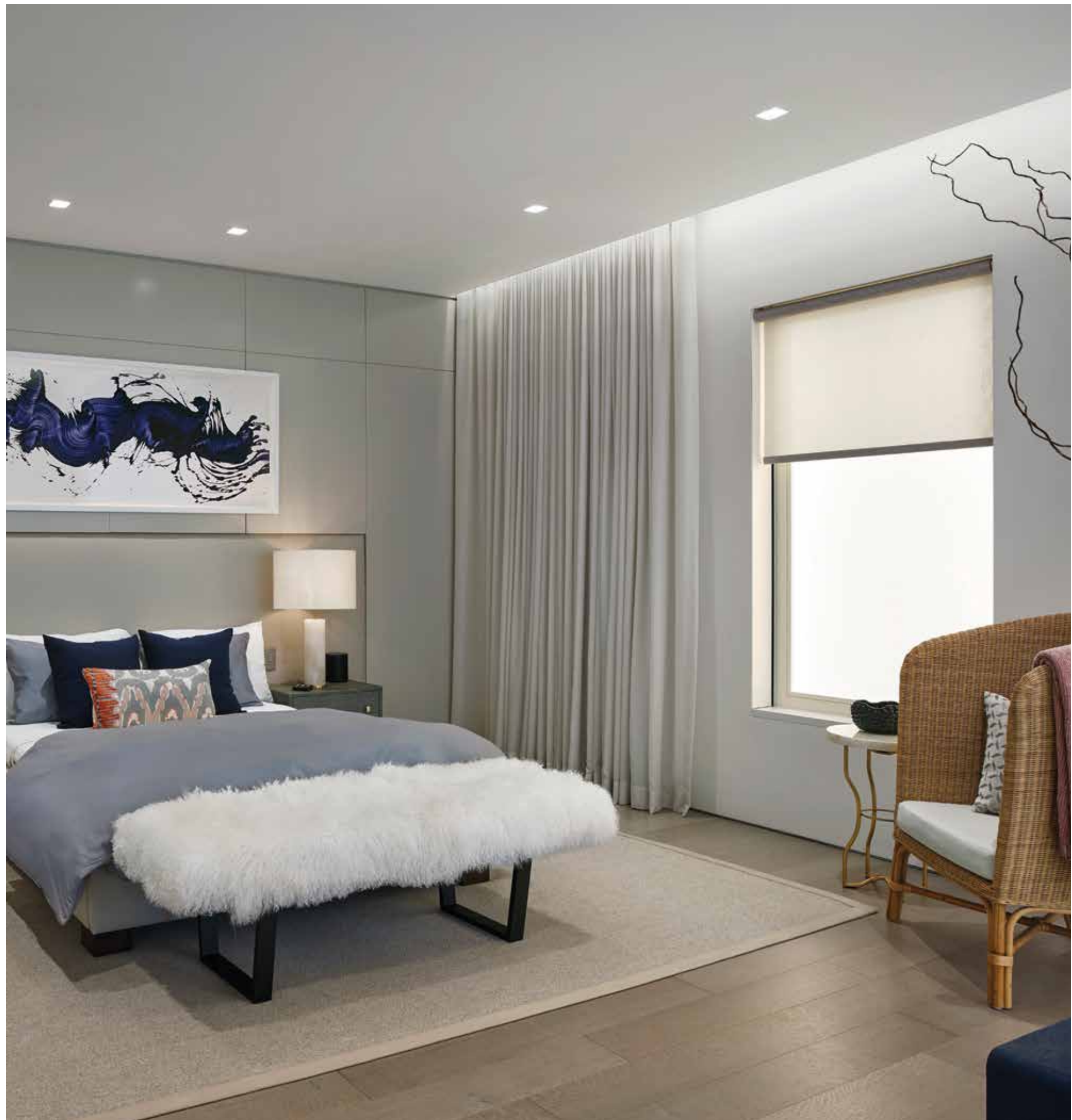


**Ripplefold**—the style is named for the soft, consistent ripples created by the drapery as it hangs from the track. Fullness of the drapery is determined by the carrier spacing. Lutron ripplefold tracks are available in three fullness factors: 80%, 100% and 120%.



### Mounting options

Choose from wall or ceiling mount. Tracks can be mounted in a cove (as pictured here) or recessed into the ceiling.



# Custom fabric programs

## Customer's Own Material (COM)

Draperies or Roman shading systems

We recognize the unique nature of your projects and the need to match or coordinate window treatments with existing furnishings. This service allows you to select materials outside of our standard offering, giving you the freedom to create your own design while still providing the reliable motorization of Lutron.\*



## Custom Printing

Traditional or Kirbé drapery and roller shades

Give your space a personal touch by reproducing a favorite painting or custom design on a Lutron approved fabric. You can choose to supply your own design or can use one of our pre-designed patterns below. In just three easy steps you can select your print, email your request, and then approve your proof and place your order.\*

### Traditional or Kirbé Vertical Drapery



### Roller Shades



# Control styles

You can choose keypad styles to complement a room's look and feel, and to coordinate with the overall design of your home.

## Architectural



Palladiom keypad



2-gang Palladiom keypad in Satin Nickel



Palladiom thermostat



GRAFIK T QS keypad



seeTouch keypad without insert



seeTouch keypad with insert

## Wireless controls



Signature Series keypad\*



Architrave keypad\* (door narrow)



Architrave keypad\* (door wide)

\* Cannot be ganged with other Architectural-style keypads



RF seeTouch tabletop keypad in Midnight



Horizontal Sheer Blinds Pico wireless control



Shade Pico wireless control



4-button Pico Wireless control for shades

# Lutron Fabric Collections

The Lutron Fabric Collections is our newly refreshed and redesigned fabric offering. Curated from leading fabric suppliers all over the world, our fabric offerings bring Lutron window treatments to the forefront of fashion. Created for high-end residences, these four fabric lines encompass over 1,500 fabrics.

## The Classico Collection



This collection of performance fabrics is available for roller, tensioned, and cable-guided shades.

## The Gallery Collection



The Gallery Collection is an extensive line of fashion fabrics for roller shades, horizontal sheer blinds, and wood blinds.

## Honeycomb Essentials



The Honeycomb Essentials Collection features an array of colorful and textured cellular fabrics, from decorative sheers to beautiful room-darkening materials.

## The Atelier Collection



The Atelier Collection is a curated collection of roller shade fabrics that balances design and function. The collection is organized by color and each deck includes select colors for the fabric family. In this collection, each sheer fabric has a perfectly coordinating blackout option for simple specification.

# Lutronfabrics.com

Order samples and start shopping today! Go to [lutronfabrics.com](http://lutronfabrics.com) and browse inspirational images, or shade types, as well as zoom in on fabric swatches to see greater detail. You can save, print, or email favorites, and order samples straight from your mobile device.

